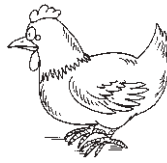


Animals

Classify the animals based on the type of outer covering they have. Write their names in the correct columns in the table.



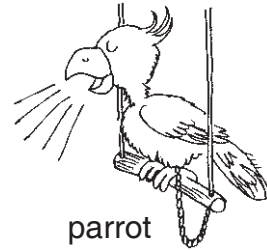
monkey



chicken



chameleon



parrot



crocodile



prawn



crab



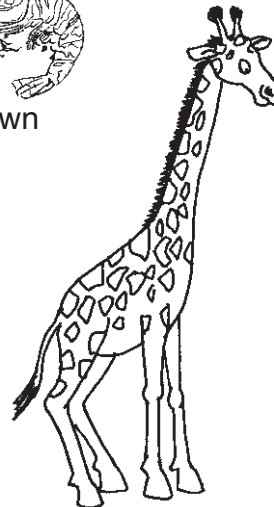
lobster



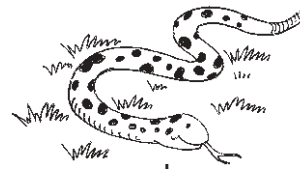
tiger



emu



giraffe



snake

Fur	Feathers	Shell	Scales

monkey, giraffe, tiger	emu, chicken, parrot	crab, prawn, lobster	chameleon, snake, crocodile
Fur	Feathers	Shell	Scales

Answers: